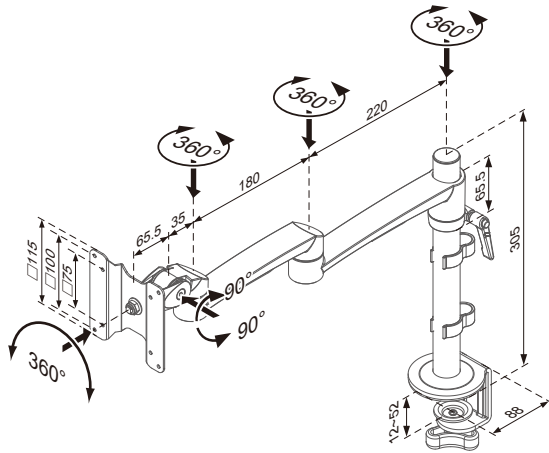


16-1 Monitor Arms

LCD Monitor Arm

- * Clamp mount
- * Single monitor arms with 75/100mm VESA bracket
- * Loading capacity: 14kg
- * With 360° rotation and 60° tilt movements
- * Standard type: one long arm and one short arm, as drawing



Item No.	Type
88295	standard
88296	with only one long arm



The die-cast aluminum frame structure ensures the arm's durability and unmatched stability



Made of 99% recyclable materials



By utilizing fewer parts, this Monitor Arm requires significantly fewer manufacturing processes