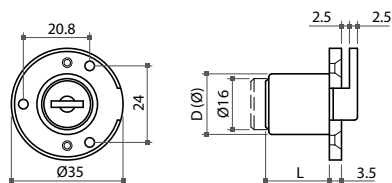


05-3 Push Locks

68930 Push Lock

- * For flap door
- * Material: zinc alloy
- * Finish: nickel, brass, black or gold plated
- * Accessories: 1 pc of rosette and 1 pc of L-type strike plate
- * Available in K/A (key alike), K/D (key different) and master key system

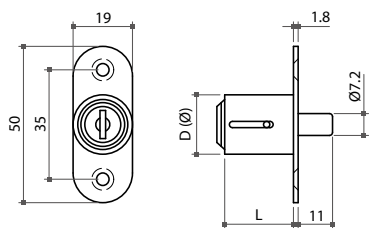


| Item No. | Cylinder size (DxL) |
|----------|---------------------|
| 68930 | Ø19x21mm |



68780 Push Lock

- * For wooden sliding door
- * Material: zinc alloy
- * Finish: nickel, brass, black or gold plated
- * Accessory: 1 pc of rosette
- * Available in K/A (key alike), K/D (key different) and master key system



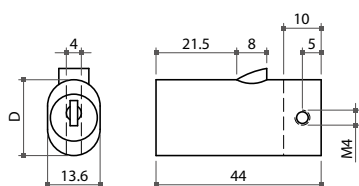
| Item No. | Cylinder size (DxL) |
|----------|---------------------|
| 68780 | Ø19x22mm |

* 30mm L. cylinder is also available



68790 Push Lock

- * For file cabinet
- * Material: zinc alloy
- * Finish: nickel, brass or black plated
- * Accessory: 1 pc of rosette
- * Available in K/A (key alike), K/D (key different) and master key system



| Item No. | Cylinder size (D) |
|----------|-------------------|
| 68790 | 20.2mm |

