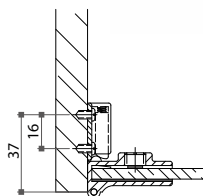
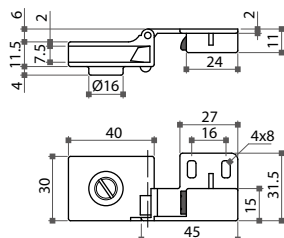


07-1 Glass Door Hinges

Glass Door Hinge

- * Material: zinc alloy
- * Facial patterns: framed (21830) or mirror (21831)
- * Finish: various metallic finishes are available
- * 170° opening and self-closing
- * For inset door
- * Top and bottom mount, for glass of 5 ~ 6mm thickness

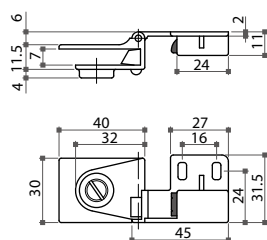
Item No.	Feature
21830	boundary part
21831	boundary part



21835 Central Glass Door Hinge

- * Material: zinc alloy, framed face only
- * Finish: various metallic finishes are available
- * 170° opening and self-closing
- * For inset door
- * Central mount, for glass of 5 ~ 6mm thickness

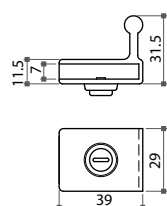
Item No.	Feature
21835	central part



21833 Glass Door Handle

- * Material: zinc alloy, framed face only
- * Finish: various metallic finishes are available
- * Central mount, for glass of 5 ~ 6mm thickness

Item No.	Feature
21833	door handle



21840 Cabinet Glass Door Hinge

- * Material: zinc alloy, framed face only
- * 170° opening
- * For overlay door with self-closing catch
- * Top and bottom mount, for glass of 5 ~ 6mm thickness

Item No.	Glass thickness
21840	5 ~ 6mm

