

12-3 Medical & Industrial Castors

MTC Trolley Twin Wheel Castors

- * Plastic housing of polyamide and glass fiber
- * Polyamide wheel with TPE tread
- * Cover in PP
- * Applicable to trolley and shopping cart



non-brake



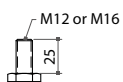
double brake
(total locking)



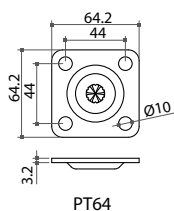
one-way roll
(fixed)

Stem Type:

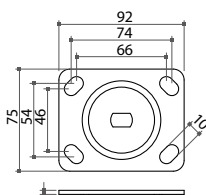
A) Thread Bolt stem:



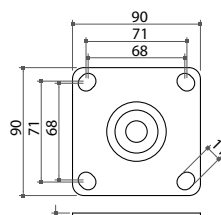
B) Plate stem:



PT64



PT9275



PT90

Item No.	Type	Dia. 	W 	Mounting Height		Dynamic Loading capacity
				plate stem 	thread stem 	
MTC75	non-brake	Ø75mm	52mm	104mm	--	70 kgs / per castor
MTC751	double brake			(for PT64)		
MTC755	one way roll				95mm	
MTC100	non-brake	Ø100mm	64mm	131.5mm	129.5mm	80 kgs / per castor
MTC1001	double brake			(for PT90)	(for PT9275)	
MTC1005	one way roll					
MTC125	non-brake	Ø125mm	74mm	157.5mm	155.5mm	90 kgs / per castor
MTC1251	double brake			(for PT90)	(for PT9275)	
MTC1255	one way roll				149mm	