



06-1 Roller & Bullet Catches
P. 112-115

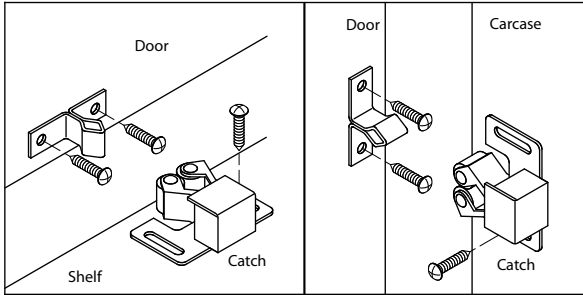
06-2 Latches & Case Locks
P. 116-120

06-3 Magnetic Push Latches
P. 121-123

06-4 Magnetic Catches
P. 124-129

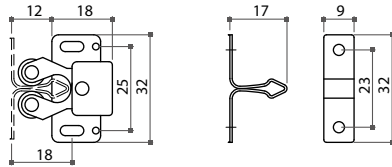
06-5 Strike Plates
P. 130-132

06-1 Roller & Bullet Catches



55010 Double Roller Catch

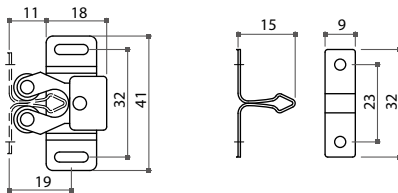
- * 25mm C.C.
- * With diamond strike
- * Finish: zinc or antique copper plated



Item No.	C.C.
55010	25mm

55031 Double Roller Catch

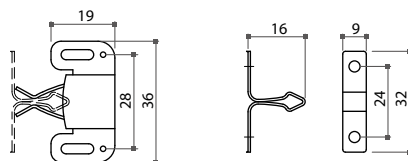
- * 32mm C.C.
- * With diamond strike
- * Finish: zinc or antique copper plated
- * Hi-Rise type



Item No.	C.C.
55031	32mm

55020 Friction Catch

- * 28mm C.C.
- * With diamond strike
- * Finish: zinc plated

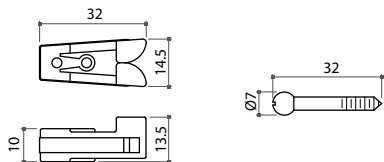


Item No.	C.C.
55020	28mm

06-1 Roller & Bullet Catches

55100 Plastic Friction Catch

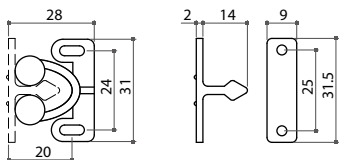
- * 9mm C.C.
- * With screw strike
- * Color: white, brown / nickel



Item No.	C.C.
55100	9mm

55090 Plastic Roller Catch

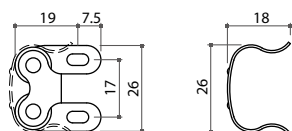
- * 24mm C.C.
- * With plastic diamond strike
- * Color: white or brown



Item No.	C.C.
55090	24mm

55210 Double Roller Catch

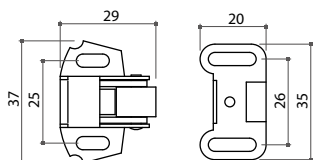
- * 17mm C.C.
- * With spring strike
- * Finish: zinc plated



Item No.	C.C.
55210	17mm

55265 Single Roller Catch

- * 25mm C.C.
- * With strike
- * Finish: antique copper, zinc or brass plated

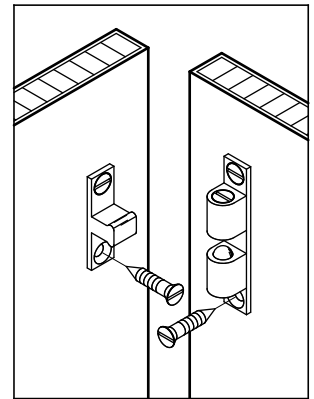
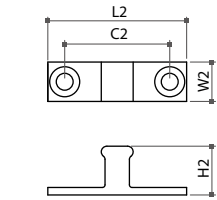
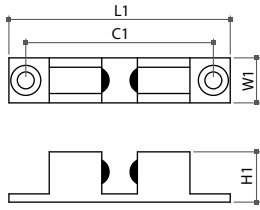


Item No.	C.C.
55265	25mm

06-1 Roller & Bullet Catches

Solid Brass Double Bead Catch

- * Finish: original color or nickel plated
- * Stainless steel bead and spring are available on request

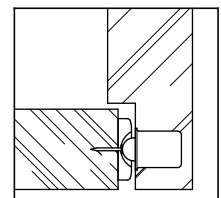
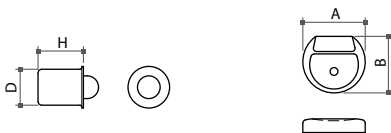


unit: mm

Item No.	L1	H1	W1	C1	L2	H2	W2	C2
55331	43.9	9.2	7.7	35	26	9	7.7	18
55332	48.6	10.6	8.9	39.8	29	11.3	7.6	19.6
55334	59.7	13.1	11.1	50	37	13.5	8.8	24
55335	68.7	15	13	58.3	42	15.8	12	30

Bullet Catch

- * With strike and nail
- * Finish: brass or nickel plated



Item No.	Size (DxH)	Strike (AxB)
55380	7x9mm	12.5x11.5mm
55381	8x11mm	16.5x14.5mm
55382	9.5x11mm	16.5x14.5mm

06-1 Roller & Bullet Catches

Solid Brass Ball Catch

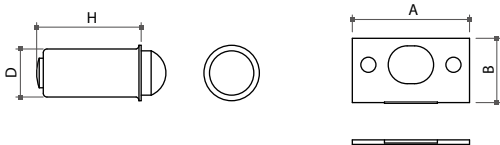
- * With strike
- * Finish: original color



Item No.	Size (DxH)	Strike (AxB)
55371	9.5x10.5mm	21x12mm
55372	11x12mm	23.5x14mm
55373	15x16mm	32.7x16.7mm
55374	18x19mm	38x20.8mm

Solid Brass Bullet Catch

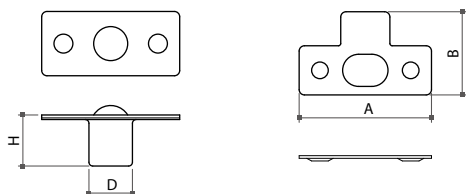
- * With strike
- * Finish: original color



Item No.	Size (DxH)	Strike (AxB)
55375	9.5x16mm	27.5x15mm
55376	12.7x28.6mm	31x17mm

Steel Ball Catch

- * With strike
- * Finish: brass plated

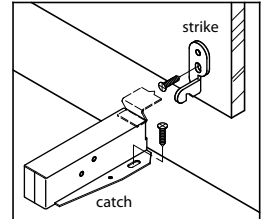
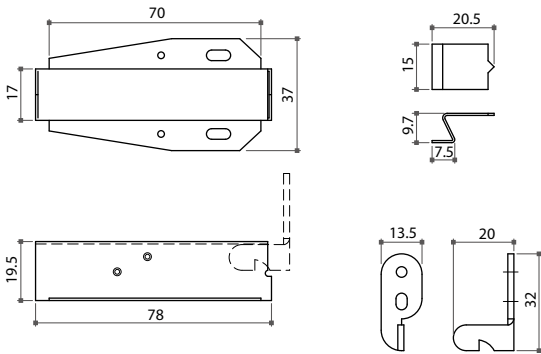


Item No.	Size (DxH)	Strike (AxB)
55250	16x13.5mm	35x22mm
55251	19x18mm	38x26mm
55252	12.7x20.5mm	53x32mm

06-2 Latches & Case Locks

55600 Cabinet Touch Latch

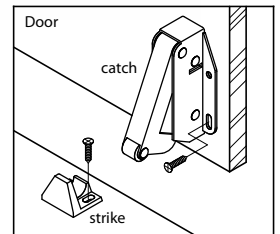
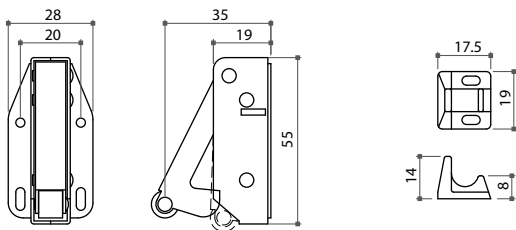
- * With strike
- * Finish: antique copper or zinc plated



Item No.	Size
55600	37x70mm

55650 Tip Latch

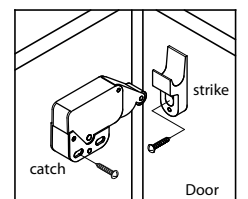
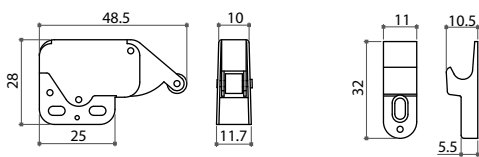
- * With nylon strike
- * Finish: zinc / white



Item No.	Size
55650	28x55mm

55690 Mini Latch

- * Steel housing, nickel or brass plated
- * With nylon strike in white or brown

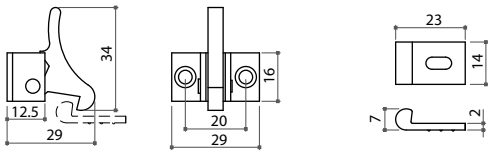


Item No.	Size
55690	28x48.5mm

06-2 Latches & Case Locks

55401 Solid Brass Elbow Catch

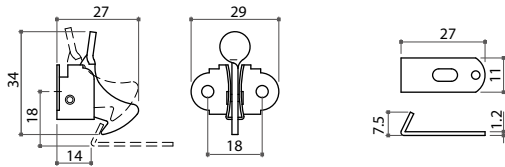
- * With strike
- * Finish: original color, nickel or chrome plated



Item No.	C.C.
55401	20mm

55400 Elbow Catch

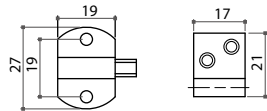
- * With strike
- * Finish: antique copper, brass, zinc or nickel plated



Item No.	C.C.
55400	18mm

55601 Spring Catch

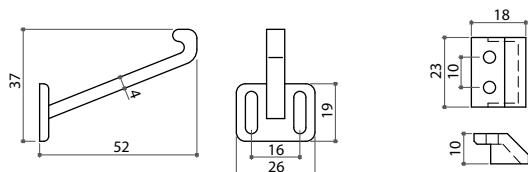
- * 19mm C.C.
- * With strike
- * Catch: 0.7mm steel
- * Strike: 1.2mm steel
- * Finish: antique English or antique copper plated



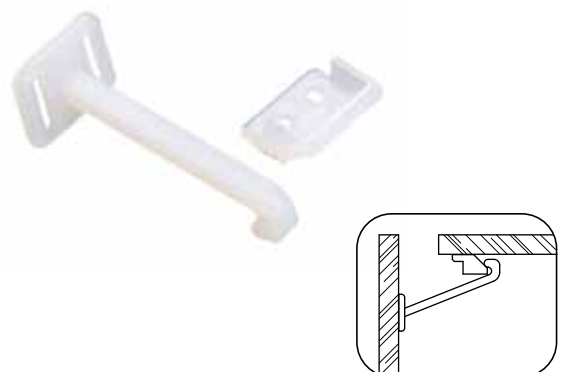
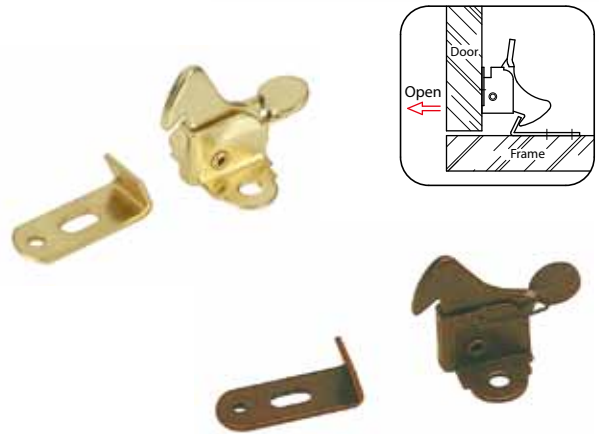
Item No.	C.C.
55601	19mm

55040 Child Proof Safety Latch

- * Material: plastic
- * With strike
- * Color: white



Item No.	C.C.
55040	16mm

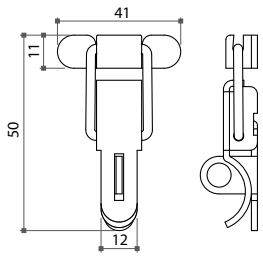


06-2 Latches & Case Locks



63870 Avion Latch

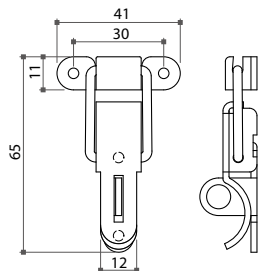
- * Material: steel
- * With striker
- * Finish: lacquered, zinc or brass plated



Item No.	Material
63870	steel

Avion Latch

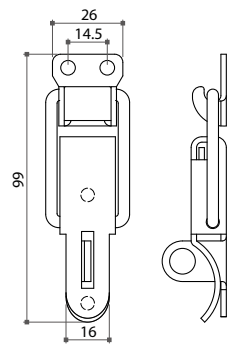
- * With striker
- 63871**
- * Steel, zinc or nickel plated
- 63876**
- * Stainless steel, original color



Item No.	Material
63871	steel
63876	stainless steel

Heavy Duty Case Lock

- * With striker
- 63872**
- * Steel, zinc or nickel plated
- 63877**
- * Stainless steel, original color



Item No.	Material
63872	steel
63877	stainless steel

06-2 Latches & Case Locks

Heavy Duty Case Lock

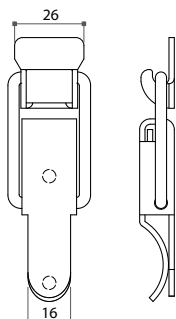
* With striker

63873

* Steel, zinc or nickel plated

63878

* Stainless steel, original color



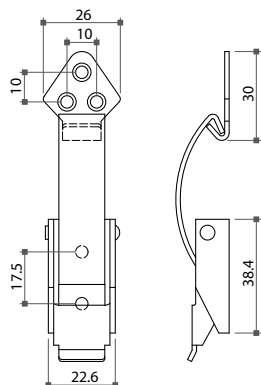
Item No.	Material
63873	steel
63878	stainless steel

63879 Case Lock

* Material: steel

* With striker

* Finish: nickel, black antique or brass plated



Item No.	Material
63879	steel

Steel Case Lock

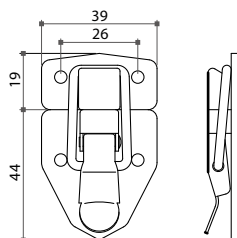
* Finish: nickel or brass plated

63890

* With 2-hole striker

63891

* With 3-hole striker

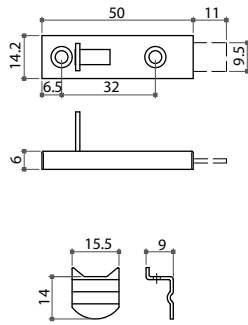


Item No.	Feature
63890	with 2-holes striker
63891	with 3-holes striker

06-2 Latches & Case Locks

61370 Cabinet Bolt Latch

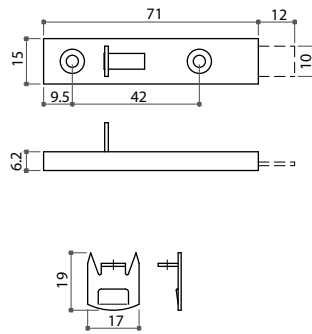
- * Material: steel
- * With strike
- * 31mm C.C.
- * Size: 50mm L.
- * Finish: nickel plated



Item No.	C.C.
61370	31mm

61380 Cabinet Bolt Latch

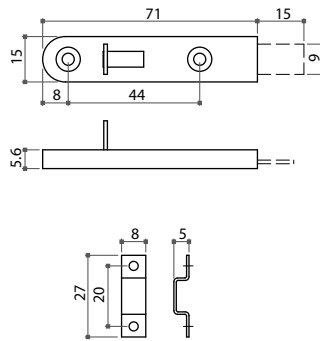
- * With strike
- * 42mm C.C.
- * Size: 71mm L.
- * Finish: nickel or brass plated



Item No.	C.C.
61380	42mm

61381 Cabinet Bolt Latch

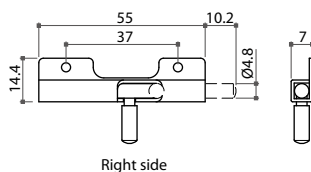
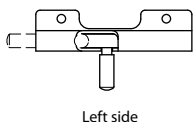
- * With strike
- * 44mm C.C.
- * Size: 71mm L.
- * Finish: nickel or brass plated



Item No.	C.C.
61381	44mm

61100 Furniture Slide Bolt Spring-Slide Type

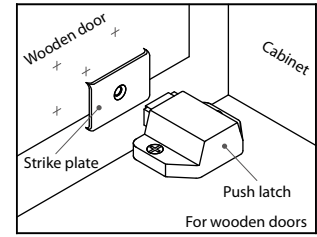
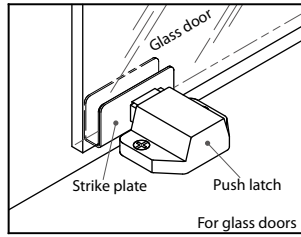
- * Material: steel
- * 1.0mm thickness
- * Available with left or right side
- * Finish: nickel plated



Item No.	C.C.
61100	37mm

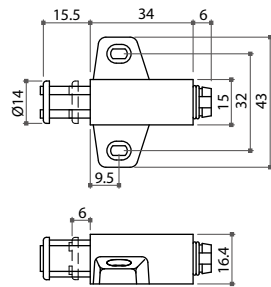
06-3 Magnetic Push Latches

Magnetic push latch catches the door with magnetic force
 Push-to-open for wooden or glass door



50710 Cylinder Magnetic Push Latch

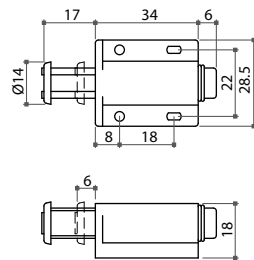
- * Material: plastic
- * Color: black, brown or white
- * 32mm C.C.
- * Single type



Item No.	C.C.
50710	32mm

50703 Cylinder Magnetic Push Latch

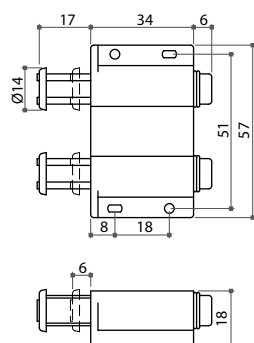
- * Material: plastic
- * Color: black, brown or white
- * 32mm C.C.
- * Single type



Item No.	C.C.
50703	32mm

50723 Cylinder Magnetic Push Latch

- * Material: plastic
- * Color: black, brown or white
- * 51mm C.C.
- * Double type

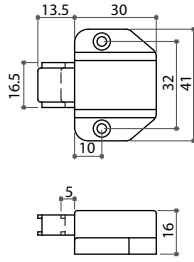


Item No.	C.C.
50723	51mm

06-3 Magnetic Push Latches

50783 Flat Magnetic Push Latch

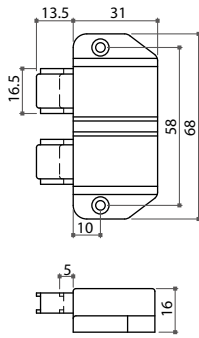
- * Material: plastic
- * Color: black, brown or white
- * 32mm C.C.
- * Single type



Item No.	C.C.
50783	32mm

50770 Flat Magnetic Push Latch

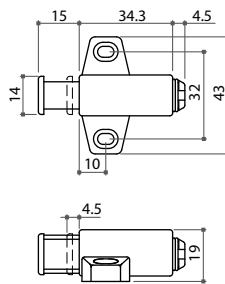
- * Material: plastic
- * Color: black, brown or white
- * 58mm C.C.
- * Double type



Item No.	C.C.
50770	58mm

50960 Square Magnetic Push Latch

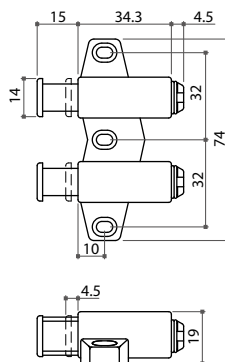
- * Material: plastic
- * Color: black, brown or white
- * 32mm C.C.
- * Single type



Item No.	C.C.
50960	32mm

50980 Square Magnetic Push Latch

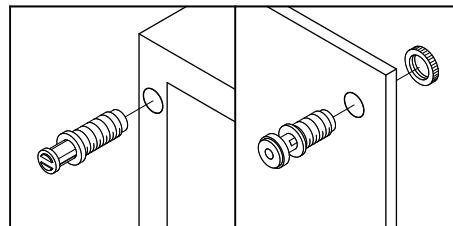
- * Material: plastic
- * Color: black, brown or white
- * 64mm C.C.
- * Double type



Item No.	C.C.
50980	64mm

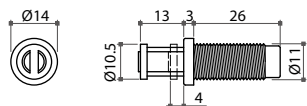
06-3 Magnetic Push Latches

Drill-in type magnetic push latch is a push-to-open solution for non-knob cabinet
Flexible mounting method on side, front or bottom panel



50880 Drill-In Type Magnetic Push Latch

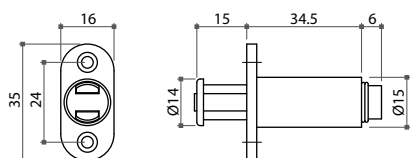
- * Material: plastic
- * Color: black
- * 11mm hole drilling



Item No.	Drilling hole
50880	11mm

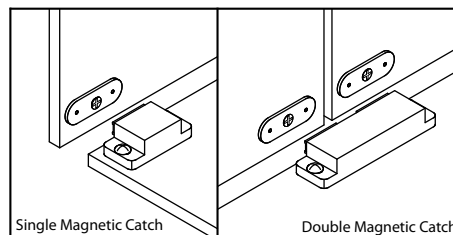
50850 Drill-In Type Magnetic Push Latch

- * Material: plastic
- * Color: black, brown or white
- * 24mm C.C.
- * 15mm drilling hole
- * Mortise type



Item No.	C.C.	Drilling hole
50850	24mm	15mm

06-4 Magnetic Catches

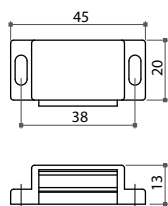


Single Magnetic Catch

50630 3 kgs holding power

50631 6 kgs holding power

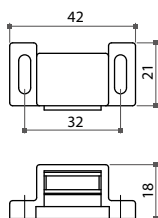
- * Material: plastic
- * Color: black, brown or white
- * 38mm C.C.
- * With strike plate



Item No.	C.C.	Holding power
50630	38mm	3 kgs
50631	38mm	6 kgs

50650 Hi-Rise Single Magnetic Catch

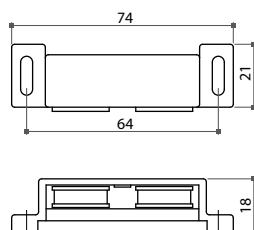
- * Material: plastic
- * Color: black, brown or white
- * High boy, 32mm C.C.



Item No.	C.C.
50650	32mm

50660 Hi-Rise Double Magnetic Catch

- * Material: plastic
- * Color: black, brown or white
- * High boy, 64mm C.C.

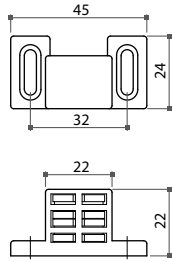


Item No.	C.C.
50660	64mm

06-4 Magnetic Catches

50350 Heavy Duty Magnetic Catch

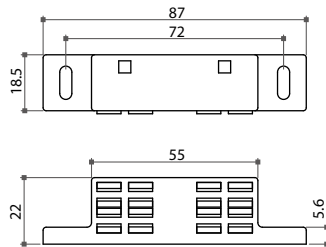
- * Material: plastic
- * Color: brown or white
- * 32mm C.C.
- * With anisotropic magnet
- * 7 kgs holding power



Item No.	C.C.
50350	32mm

50340 Heavy Duty Magnetic Catch

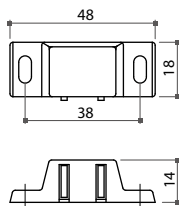
- * For double shutter application
- * Finish: white / zinc plated
- * 72mm C.C.



Item No.	C.C.
50340	72mm

50683 Heavy Duty Magnetic Catch

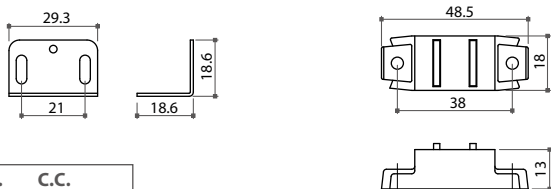
- * Material: plastic
- * Color: black, brown or white
- * 38mm C.C.
- * With anisotropic magnet



Item No.	C.C.
50683	38mm

50680 Magnetic Catch

- * Material: plastic
- * Color: tan or white
- * 38mm C.C.
- * With strike plate, antique copper plated

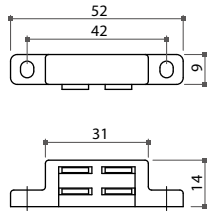


Item No.	C.C.
50680	38mm

06-4 Magnetic Catches

50651 Single Magnetic Catch

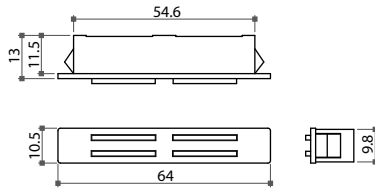
- * Material: plastic
- * Color: brown or white
- * 40mm C.C.



Item No.	C.C.
50651	40mm

50542 Snap-In Magnetic Catch

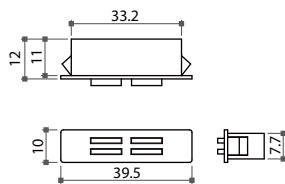
- * With anisotropic ferrite magnet
- * Finish: white / zinc plated



Item No.	Feature
50542	snap-in

50543 Snap-In Magnetic Catch

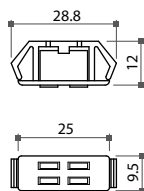
- * With anisotropic ferrite magnet
- * Finish: white / zinc plated



Item No.	Feature
50543	snap-in

50540 Snap-In Magnetic Catch

- * Plastic housing in white
- * Metal insert plate, zinc plated

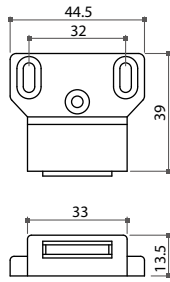


Item No.	Feature
50540	snap-in

06-4 Magnetic Catches

50670 Magnetic Catch

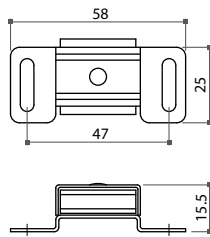
- * Material: plastic
- * Color: brown or white
- * 32mm C.C.



Item No.	C.C.
50670	32mm

50450 Aluminium Case Magnetic Catch

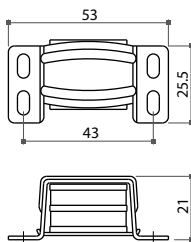
- * Aluminium housing
- * 47mm C.C.
- * Wood grain or original color



Item No.	C.C.
50450	47mm

50460 Aluminium Case Magnetic Catch

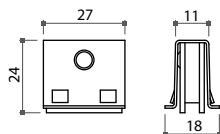
- * Aluminium housing
- * 43mm C.C.
- * Wood grain or original color



Item No.	C.C.
50460	43mm

50420 Aluminium Case Magnetic Catch

- * Aluminium housing
- * With strike plate, zinc plated
- * Wood grain or original color

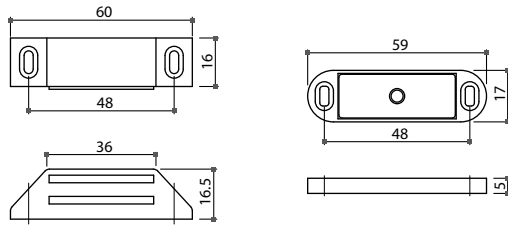


Item No.	Accessory
50420	with strike plate

06-4 Magnetic Catches

50570 Heavy Duty Magnetic Catch

- * Material: plastic
- * Color: brown or white
- * 48mm C.C.
- * With strike plate



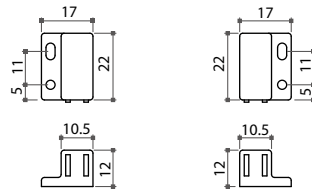
Item No.	C.C.
50570	48mm

Magnetic Catch

50861 Right type

50862 Left type

- * Plastic housing
- * Color: black or brown
- * 11mm C.C.



Right type

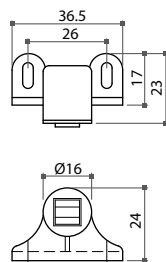
Left type



Item No.	C.C.	Feature
50861	11mm	right type
50862	11mm	left type

50561 Single Magnetic Catch

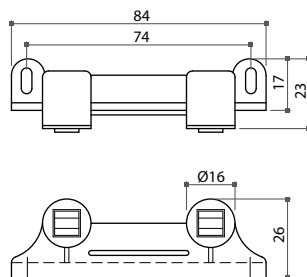
- * Material: plastic
- * Color: brown or white
- * 26mm C.C.
- * With strike plate



Item No.	C.C.
50561	26mm

50562 Double Magnetic Catch

- * Material: plastic
- * Color: brown or white
- * 74mm C.C.
- * With two strike plates

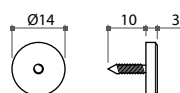
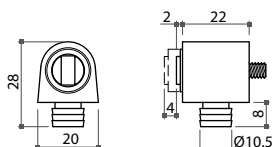


Item No.	C.C.
50562	74mm

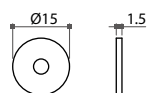
06-4 Magnetic Catches

Press-In Magnetic Catch

- 50550** With isotropic magnet, 1 kg holding power
- 50550-1** With isotropic magnet, 2 kgs holding power
- * Plastic housing in brown or white color
- * With **50552** nail strike or **50010** round strike



50552



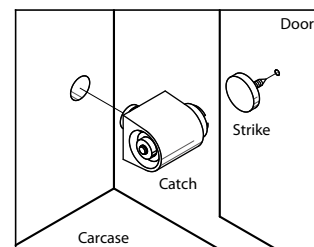
50010

Item No.	Holding power
50550	1 kg
50550-1	2 kgs



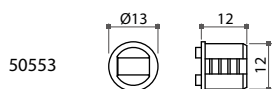
50552

50010

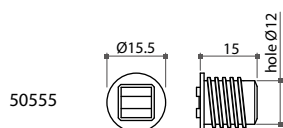


Press-In Magnetic Catch

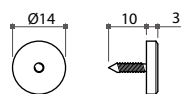
- 50553** Ø12x12mm
- 50555** Ø12x15mm
- * Plastic housing in brown or white color
- * With **50552** nail strike or **50010** round strike



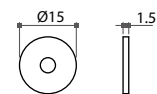
50553



50555



50552



50010

Item No.	Size
50553	Ø12x12mm
50555	Ø12x15mm

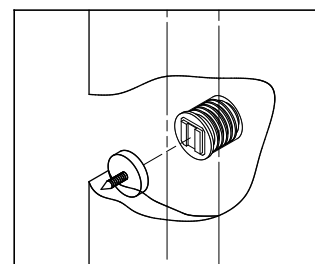


50553

50555

50552

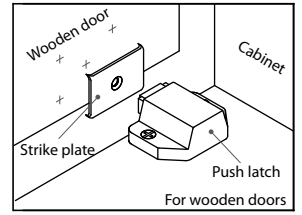
50010



06-5 Strike Plates

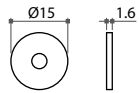
Strike Plates For Wooden Door

- * Material: steel
- * Finish: zinc, antique copper, nickel or black oxide



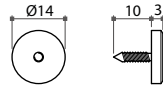
50010

- * Size: Ø15x1.6mm



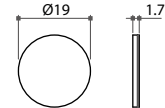
50552

- * Size: Ø14mm with nail



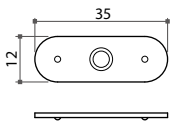
50120

- * Size: Ø19mm
- * Self-adhesive



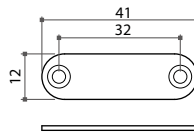
50100

- * Size: 12x35mm



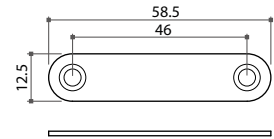
50131

- * Size: 12x41mm
- * 32mm C.C.



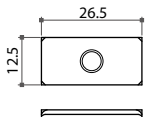
50241

- * Size: 12.5x58.5mm
- * 46mm C.C.



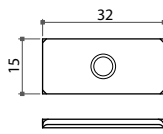
50140

- * Size: 12.5x26mm



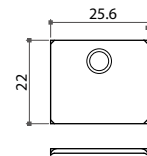
50143

- * Size: 15x32mm



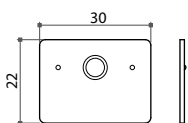
50150

- * Size: 22x26mm



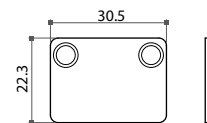
50160

- * Size: 22x30mm



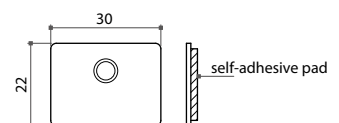
50180

- * Size: 22.3x30.5mm



50190

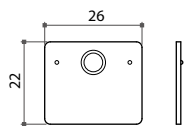
- * Size: 22x30mm
- * With self-adhesive pad



06-5 Strike Plates

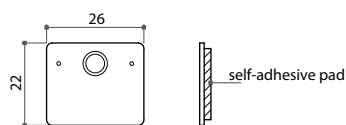
50170

* Size: 22x26mm

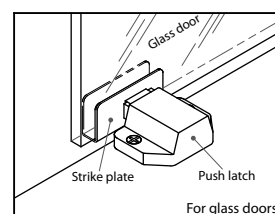


50195

* Size: 22x26mm
* With self-adhesive pad

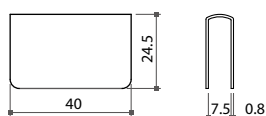


Strike Plates For Glass Door



50020 Catch Plate

* Material: steel
* Finish: black, white, brass, chrome or silver gray
* Size: 40x24.5mm
* For glass of 4 ~ 6mm thickness
* With rubber cushion



Item No.	Size	Glass thickness
50020	40x24.5mm	4 ~ 6mm

50030 "Push" Catch Plate

* Material: steel
* Finish: black, white, brass or chrome
* Size: 40x24.5mm
* For glass of 4~ 6mm thickness
* With rubber cushion

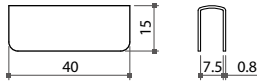


Item No.	Size	Glass thickness
50030	40x24.5mm	4 ~ 6mm

06-5 Strike Plates

50042 Catch Plate

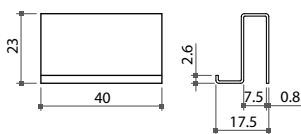
- * Material: steel
- * Finish: black, white, brass or chrome
- * Size: 40x15mm
- * For glass of 4 ~ 6mm thickness
- * With rubber cushion



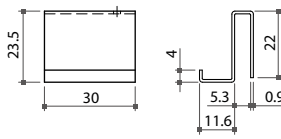
Item No.	Size	Glass thickness
50042	40x15mm	4 ~ 6mm

Handle Plate

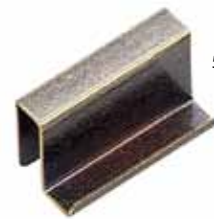
- * Material: steel
- * Finish: black, white, brass, chrome or silver gray
- * For glass of 4 ~ 6mm thickness
- * With rubber cushion



50060



50063



50060

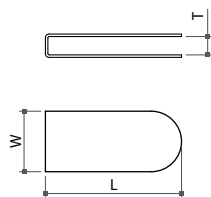


50063

Item No.	Size	Glass thickness
50060	40x23mm	4 ~ 6mm
50063	30x22mm	4 ~ 6mm

Catch Plate

- * Material: steel
- * Finish: black, white, brass, chrome or silver gray
- * For glass of 5 ~ 6mm thickness
- * With rubber cushion



Item No.	Size (LxW)	Thick of plate (T)
50090	37x20mm	6.3mm
50091	45x20mm	6mm
50092	45x45mm	6mm
50093	37x20mm	5mm
50095	23x20mm	6mm

